



Webmaster Update

Tim PATON for Phil HARBIDGE

philharbidge@gmail.com



Phil Harbidge - PathControl, General Manager - Kuala Lumpur
22 years Wellbore Positioning
Well Placement, CA, Risk Assessment, Survey QAQC & Optimization
ISCWSA Webmaster and QAQC Sub-committee Chair, Drilling Data
Quality and Uncertainty Description Sub-Committee member

Work : **PathControl** : **Intercept, Relief Well, P&A, Wellplacement, Survey Management,
Advanced Survey Corrections, Software Setup,
Database Audits, Training and more**

Worked :
**Sperry-Sun, Baker Hughes INTEQ and Schlumberger: DD Service Companies
Marine Surveyor and Civil Engineer and the Planetary Space Science Research Institute**





Website Hits

Highlights:

“Events pages” hit rate is higher than Oct 21 & Mar 22”

“Top 5 pages” hit rate is higher than Oct 21 & Mar 22”

Lowlight:

“Contact us is slightly down on previous 18 months”

Webmaster Update

TOP 5 FORMS	
Name	30-Day Submissions
Contact Us	27
Application for Course Registration - Prepaid Registrants	7
Get Updates	5
Register for "Intro to Wellbore Positioning"	3
Application for Course Registration	3

TOP 5 PAGES	
Pages	30-Day Traffic
	1172
Error Model Documentation	233
eBOOKs	198
About The Industry Steering Committee on Wellbore Survey Accuracy	151
The ISCWSA Wellbore Positioning Course	142
General Meeting Minutes	98

TOP 5 EVENTS	
Events	30-Day Traffic
	1420
ISCWSA #56 - Houston, 5/6 October 2022	631
ISCWSA #55 (Virtual) Meeting	73
ISCWSA Meeting 46	63
ISCWSA #54 (Virtual) Meeting	49
ISCWSA Meeting #52 (Remote)	31



Subscribers to iscwsa.net page

- Highlights :

- **Subcommittee Chair Persons are editing as Super Users ! :**

- Subcommittee content
 - Add / Remove positions and officers
 - Add files
 - Add distribution e-mail
 - Hosting OWSG Meetings on the webpage!
 - Sub-Committee members are mostly signed up
 - Link for submitting a Tendenci Support Ticket: <https://www.tendenci.com/tickets/>
 - [USE HELP for Troubleshooting](#) and editing your Subcommittee Webpage



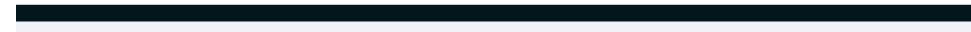
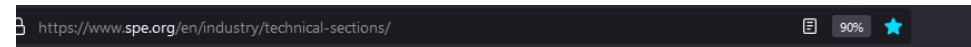
SPE Website

- - You must be an [SPE member](#) to join technical sections and Vote in our meetings
- - Click this link to join the SPE.org and WPTS Technical Section
- <https://www.spe.org/member/access/OnlineCommunityPreferences/EditOnlineCommunityPreferences>
- Our SPE.org page directly links to our iscwsa.net page



How to Join the WPTS

<https://www.spe.org/en/industry/technical-sections/>



Resources

Development

Services

Resources

Technical Sections

Manual

Technical Sections

Manual

Technical Sections

Manual

Technical Sections

Technical Sections

Technical Section represents a grouping of global members who share an interest in a specific technical topic. These communities of SPE members share ideas, promote competence, and develop projects related to their technical interest. Technical Sections tend to be more task-oriented than discussion-oriented. They meet virtually for the most part, but are encouraged to hold a face-to-face meeting at least once a year.

Join a Technical Section here.

Current Technical Sections

- Artificial Lift and Gas Well Deliquification
- Carbon Dioxide Capture, Utilization and Storage
- Drilling Systems Automation
- Digital Energy
- Drilling Uncertainty Prediction
- Flow Assurance
- Flow Measurement
- Geomechanics
- Human Factors
- Hydraulic Fracturing
- Petroleum Data-Driven Analytics (PD²A)
- Research and Development
- Separations Technology
- Sustainable Development
- Unmanned Systems
- Water Life Cycle and Strategy
- Wellbore Positioning
- Well Integrity

<https://www.spe.org/en/industry/>



Comprehensive, SPE-managed online knowledge bases covering all aspects of E&P.

Resources by Topic

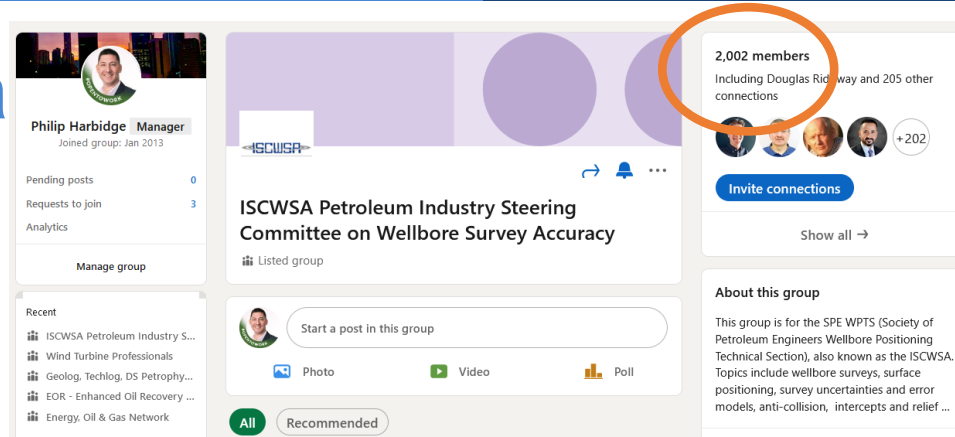
R&D and TECHNICAL	BY FOCUS	CAREER DEVELOPMENT
Research and Development	SPE Disciplines	Continuing Ed, Training and Certification
The 5 Grand Challenges	SPE Journals and Books	SPE Industry Job Board
Petroleum Reserves Definitions	Gaia Sustainability Program	Mentor Program
Reserves Committee	Faculty	
CO ₂ Storage Resources Management System	Students	FEATURED RESOURCE
Technical Papers and Research	Senior Professionals	Members in Transition Toolkit
Technical Sections	Young Professionals	Support, advice and resources for members during the downturn.
	Diversity and Inclusion in O&G	



Other ISCWSA Social Media

[Click here for the ISCWSA LinkedIn page](#)

2002 Members with a small 6months increase in membership





Website Enhancements

- Sub-committee Chairs and member Call for Website new functionality ideas?
- Improvements Meeting with Tendenci April 12th :
 - Sub-committee e-mail account – **in progress**
 - Voting functionality – **in progress**
 - Controlled document storage **in-progress**
 - **sub-committee projects, e-books and group documents**



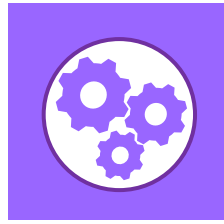
Thanks to

ISCWSA Committee Sub-Committee Chairs

All Members feedback and support on the website and Tim for presenting today

- Tendenci

Tim PATON for Phil Harbidge
philharbidge@gmail.com



Questions