

## Activity Report

Carol Eve Mann

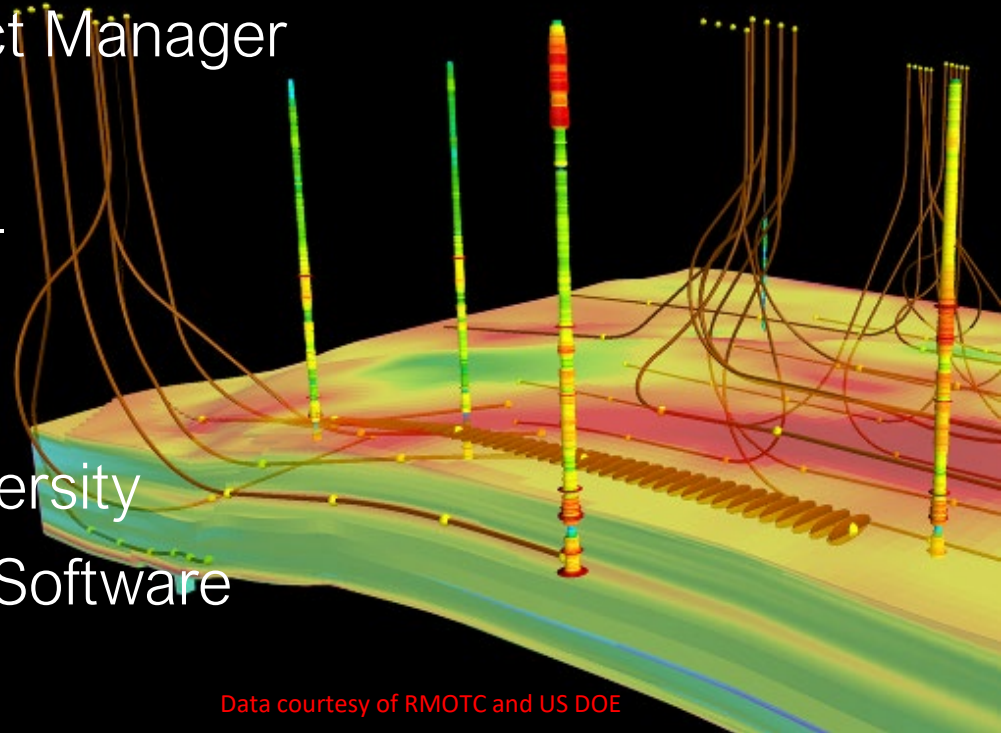
# Speaker Bio: Carol Mann

- WellArchitect® Software Product Manager
- Dynamic Graphics, Inc
  - 30+ years in Oil and Gas Multi-disciplinary Software Solutions
  - BS Geology, Lafayette College
  - MS Geophysics, Stanford University
  - 16 years in Directional Drilling Software
  - 13 years with the ISCWSA

2

# Speaker Bio: Carol Mann

- WellArchitect® Software Product Manager
- Dynamic Graphics, Inc
- 30+ years in Oil and Gas Multi-disciplinary Software Solutions
- BS Geology, Lafayette College
- MS Geophysics, Stanford University
- 16 years in Directional Drilling Software
- 13 years with the ISCWSA



Data courtesy of RMOTC and US DOE

# Speaker Bio: Carol Mann

- 40 of the 60 miles Nov 2019
- Raised over \$3k for breast cancer research
- Training to do all 60 miles November 2019



# Education Subcommittee

## Mission Statement:

...is an advisory body dedicated to raising awareness of wellbore positioning practices and challenges within the drilling industry through workshops, webinars, ebooks, public lectures, and other media.



An Advisory, Awareness  
Committee



In the business of  
running a school

## Distinguished Lecturer

Each year, SPE selects a group of professionals, nominated by their peers, to share their knowledge and expertise with SPE members through visits to local sections.

- Harald Bolt
- Ross Lowden (nominated by SLB)

- Webinars

7

- *Estimating the Economic Impact of Wellbore Positioning Errors on Reservoir Recovery* (Marc Willerth/Lisa Grant)
- Reprise or release of Steve Sawaryn's DL talk on Collision Avoidance
- *Where are they now? – Principles of Wellbore Survey Data Management Everyone Should Know* (Steve Grinrod)

Suggestions? Email [carol@dgi.com](mailto:carol@dgi.com) or [ryan.kirby@superiorqc.com](mailto:ryan.kirby@superiorqc.com)

## Outreach

8

- Student outreach
  - Project to determine university programs
  - “Educate the Educator”
- Drillbotics Competition (DSATS)
  - Sponsorship
  - Involvement



- SPE ATCE ½ Day Special Sessions
- Joint initiative: DSATS, WBPTS, DETS, OGDQ
- 2018: *The Automation of Well Placement*
- 2019: *Automation of the Well Construction process: how far have we gone; how can we go further; is it worth it?*

9

- Intro to Wellbore Positioning
  - Spanish version coming
- Wellbore Ranging Technologies, Intercept Applications, and Best Practices
  - Version 2 now available
  - Submit corrections / comments to [carol@dgi.com](mailto:carol@dgi.com) / [Roger.Goobie@bp.com](mailto:Roger.Goobie@bp.com)



- The Test site is in place
- Two pipes now – 2000' long under Loch Ness

11



# The Education Subcommittee

- Special Thanks to the Entire Education Committee
- Coming regularly? Interested in making a difference?
  - Come join us!

12

# • Thank you!